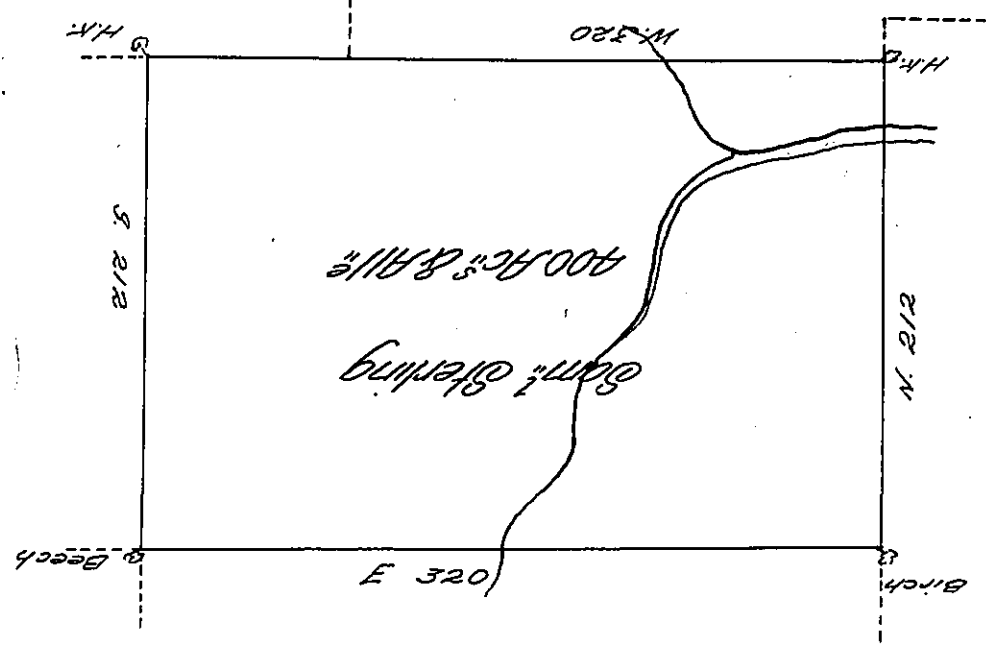


*Simon Spalding*

*Page  
192*

*Lucy Starling*



*Jesse Fell*

*Saml Starling Junr*

*By Virtue of a Warrt dated 20<sup>th</sup> August 1792 Surveyed the 10<sup>th</sup>  
of August 1793 Unto Saml Starling the above described  
Tract of Four Hundred Acres of Land & Allow<sup>e</sup> Situated on  
a branch of Sugar Creek in Luzerne County*

*By W<sup>m</sup> Montgomery D.S.*

*To Daniel Brodhead Esq<sup>r</sup> }  
Surv<sup>r</sup> Gen<sup>l</sup> of Pennsylv<sup>a</sup> }*

*Jo. J. Wallis D.S.*

23

*IN TESTIMONY that the above is a copy of the original remaining on file in  
the Department of Internal Affairs of Pennsylvania, made  
comformably to an Act of Assembly approved the 16th day of  
February 1833, I have hereunto set my hand and caused  
the Seal of said Department to be affixed at Harrisburg,  
this twenty-third day of January 1907*

*Geo. A. D. Brown*  
Secretary of Internal Affairs.